

Sustainable Drug Seller Initiatives Partners



Role of GIS Mapping in Drug Shop Inspection Activities

Dennis Kimera

UBOS

Stakeholder Dissemination Meeting Kampala

August 20, 2014



NATIONAL DRUG AUTHORITY



The Problem

- NDA has not yet built skills in geographic information systems (GIS) or acquired GIS software for the spatial location and distribution of ADS
- It can be challenging to locate Class C drug shops and ADS, especially in rural areas
- This makes regulatory monitoring and inspection of drug outlets difficult



NATIONAL DRUG AUTHORITY



Objectives

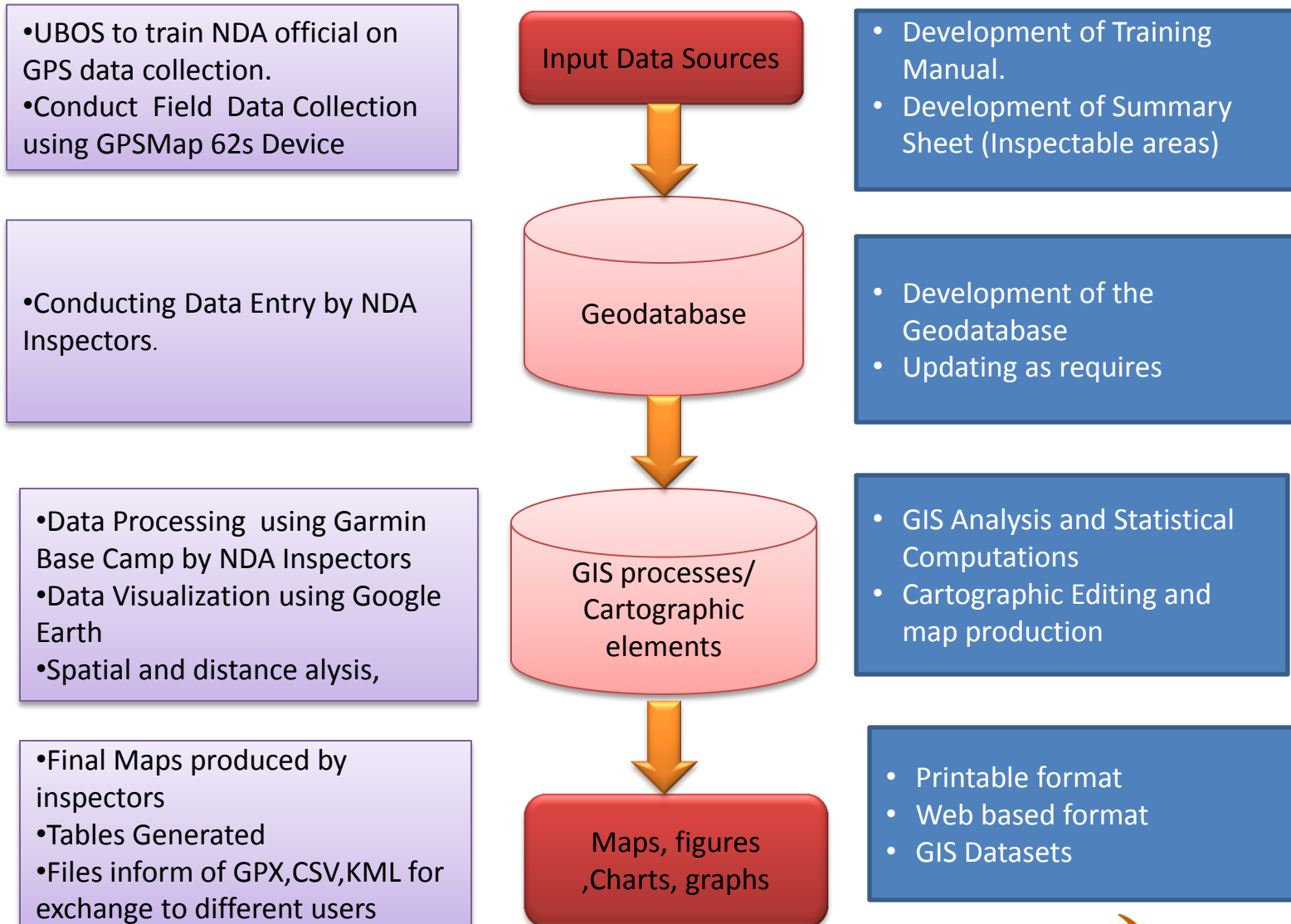
- Develop capacity of National Drug Authority to utilize geographic information systems (GIS) in mapping locations of ADS and other health facilities
- Specific objectives include
 - Developing skills of NDA inspectors in collecting GIS data
 - Generating maps showing location of drug outlets using Google Earth, which is an easy to use and low-cost software



NATIONAL DRUG AUTHORITY



Process



Garmin GPS Device



NATIONAL DRUG AUTHORITY



Sustainable Drug Seller Initiatives



Management Sciences for Health

Inspection and GIS Mapping



NATIONAL DRUG AUTHORITY



Sustainable Drug Seller Initiatives



Inspection and GIS mapping



NATIONAL DRUG AUTHORITY



Sustainable Drug Seller Initiatives



Results

- Successfully trained all NDA Regional and selected District Drug Inspectors in Global Positioning System (GPS) including map generation of maps using Google Earth
- Generated maps showing locations of the different ADS in Mityana, Kibaale & Kyenjojo districts
- Developed a database of all the ADS locations and their inspected data, which can be queried in assessing ADS services and premise quality.

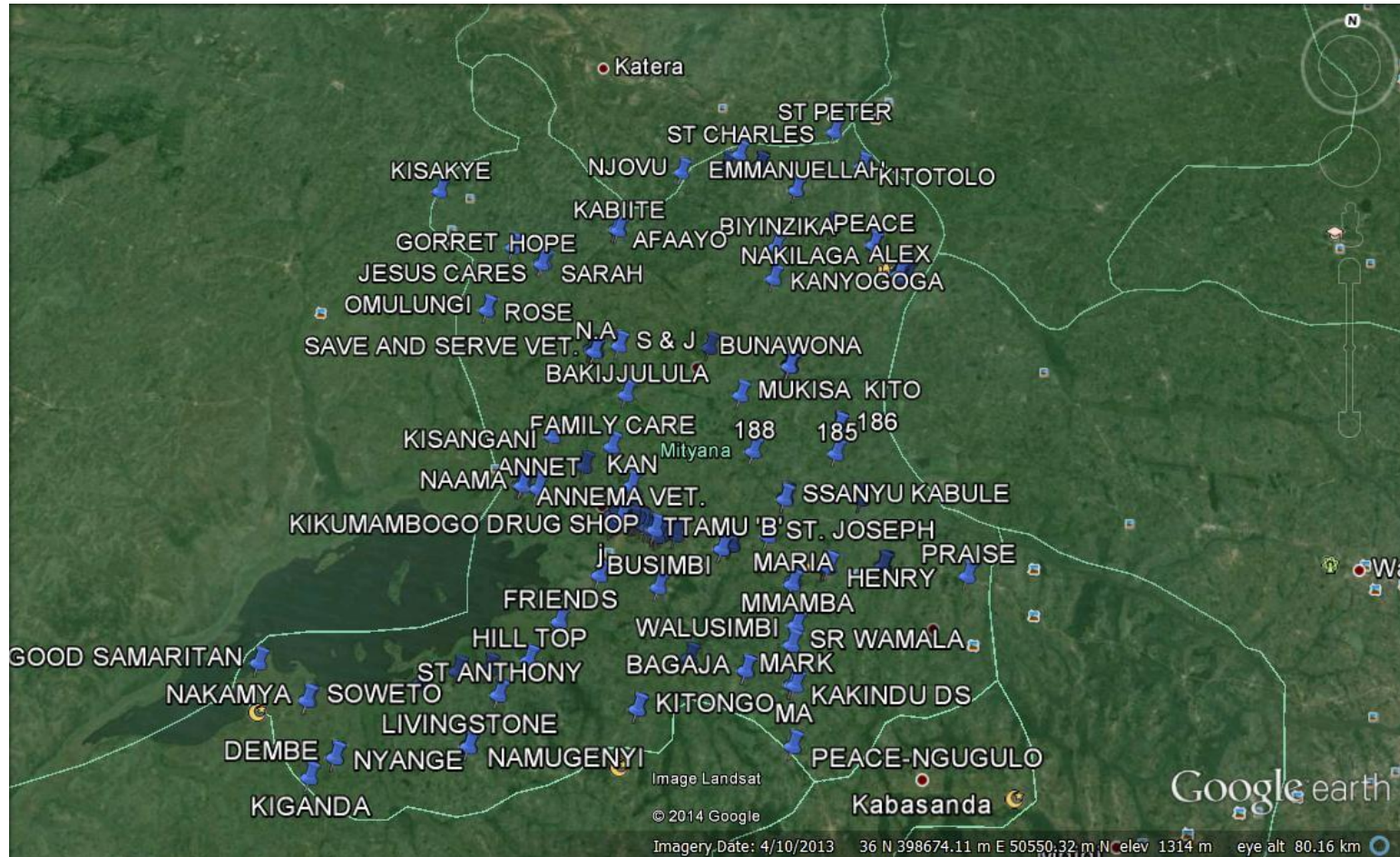


NATIONAL DRUG AUTHORITY



Mityana District Map

ADS and Class C Drug Shops



NATIONAL DRUG AUTHORITY



Sustainable Drug Seller Initiatives



Management Sciences for Health

Zone level map



NATIONAL DRUG AUTHORITY



Sustainable Drug Seller Initiatives



Management Sciences for Health

Google Earth View

Information available on each drug shop

The screenshot shows the Google Earth interface with a map of a village. A popup window displays the following information for the 'KIKUMAMBOGO DRUG SHOP':

- KIKUMAMBOGO DRUG SHOP**
- GPS DATA COLLECTION SUMMARY SHEET (ADS)
- 1.Name of the Drug Outlet: KIKUMAMBOGO D/S
- 2.Location of the Drug Outlet:
 - i) District: MITYANA
 - ii) Sub County: MITYANA TOWN COUNCIL
 - iii) Village: KIKUMAMBOGO
- 3.GPS Coordinates
 - i) Eastings: 0395746
 - ii) Northings: 0043869
- 4.FIN No:2110680872
- i) License No: 0056/O/H/14/MTY
- ii) Drug Shop Accredited? YES
- 5.Premises Suitable: YES
- 6.Name of In Charge: GLADECY BITATULE CILLA
 - i) Qualification of Incharge: REGISTERED NURSE
- 7.Name of Drug Seller: GLADECY BITATULE CILLA
 - i) Telephone contact:
 - ii) Qualification of Drug Seller: REGISTERED NURSE

The map shows several locations marked with blue pins, including B.K, ST.CATHERINE, KIKU, SUUBI, ONO, ST. M, and MTONYE. The popup window also shows the Google Earth logo and the text 'MATILDA Google earth'.



NATIONAL DRUG AUTHORITY



Management Sciences for Health

Garmin Base Camp View

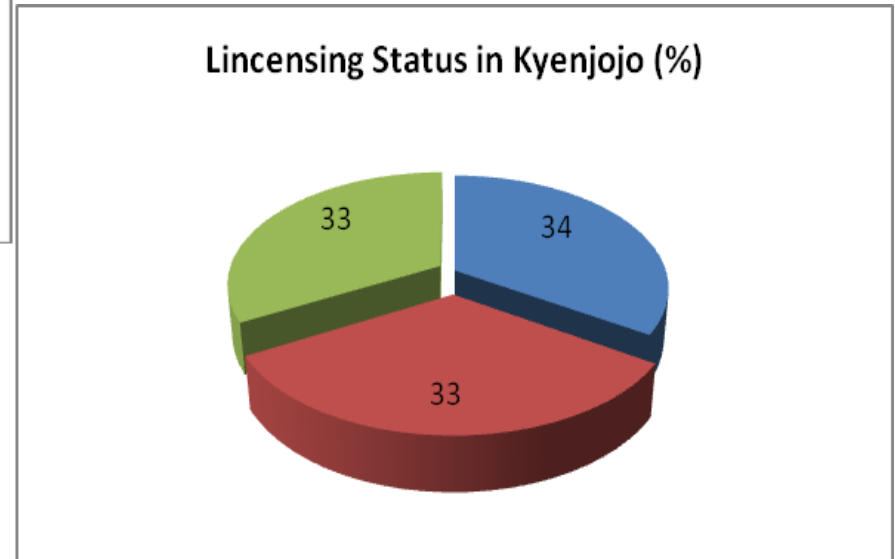
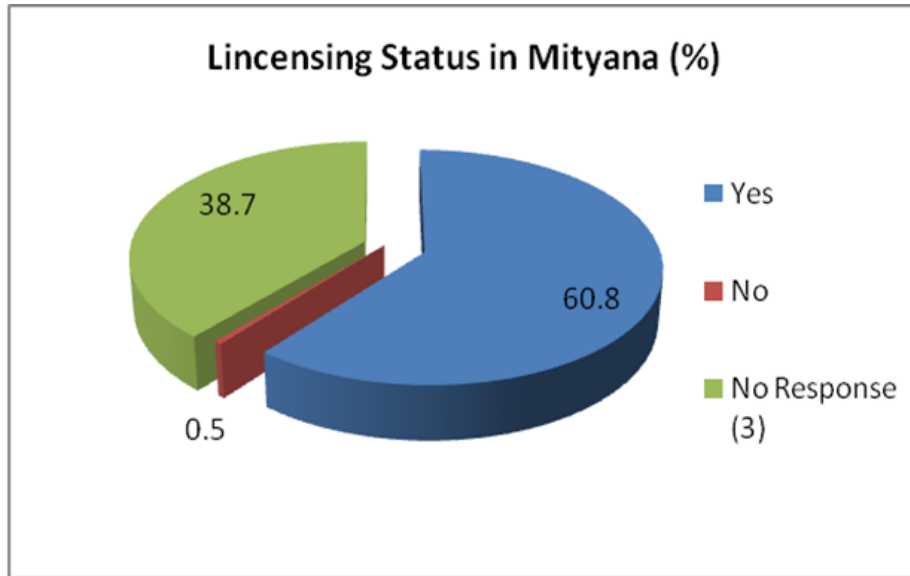
The screenshot displays the Garmin BaseCamp software interface. The main window shows a map of the Mityana ADS-ALL area with several locations marked with blue crosses: KIBINGE, KIBUUSE, KIGANDA, KIKONGE, KIKUMAMBOGO DRUG SH, KIKUNYU, KIRYOKYA VET., KISA, KISA KYAMUKAMA, KISAKYE, ST. CATHERINE, YESU AFUGA VET., ST. MAGDALENE, and LUCY. A blue arrow points to the Kikumambo Drug Shop location. A pop-up window for 'KIKUMAMBOGO DRUG SHOP' is open, showing a 'SUMMARY SHEET' with the following details:

- 1. Name of the Drug Outlet: KIKUMAMBOGO DS
- 2. Location of the Drug Outlet:
 - i) District: MITYANA
 - ii) Sub County: MITYANA TOWN COUNCIL
 - iii) Village: KIKUMAMBOGO
- 3. GPS Coordinates:
 - i) Eastings: 0395746
 - ii) Northings: 0043869
- 4. FIN No: 2110680872
- i) License No: 0056/O/H/14/MTY
- ii) Drug Shop Accredited? YES
- 5. Premises Suitable: YES
- 6. Name of In Charge: GLADECY BITATULE CILLA
 - i) Qualification of Incharge: REGISTERED NURSE

At the bottom of the pop-up window, there are buttons for 'Add File Link...' and 'Add Web Link...'. The left sidebar shows a 'Library' with 'My Collection' and 'Mityana ADS-ALL' folders, and a list of locations under 'Mityana ADS-ALL'.



Example of Inspection Data Analyzed



Source: Data Collection and Supervision in Kyenjojo & Mityana, April 2014

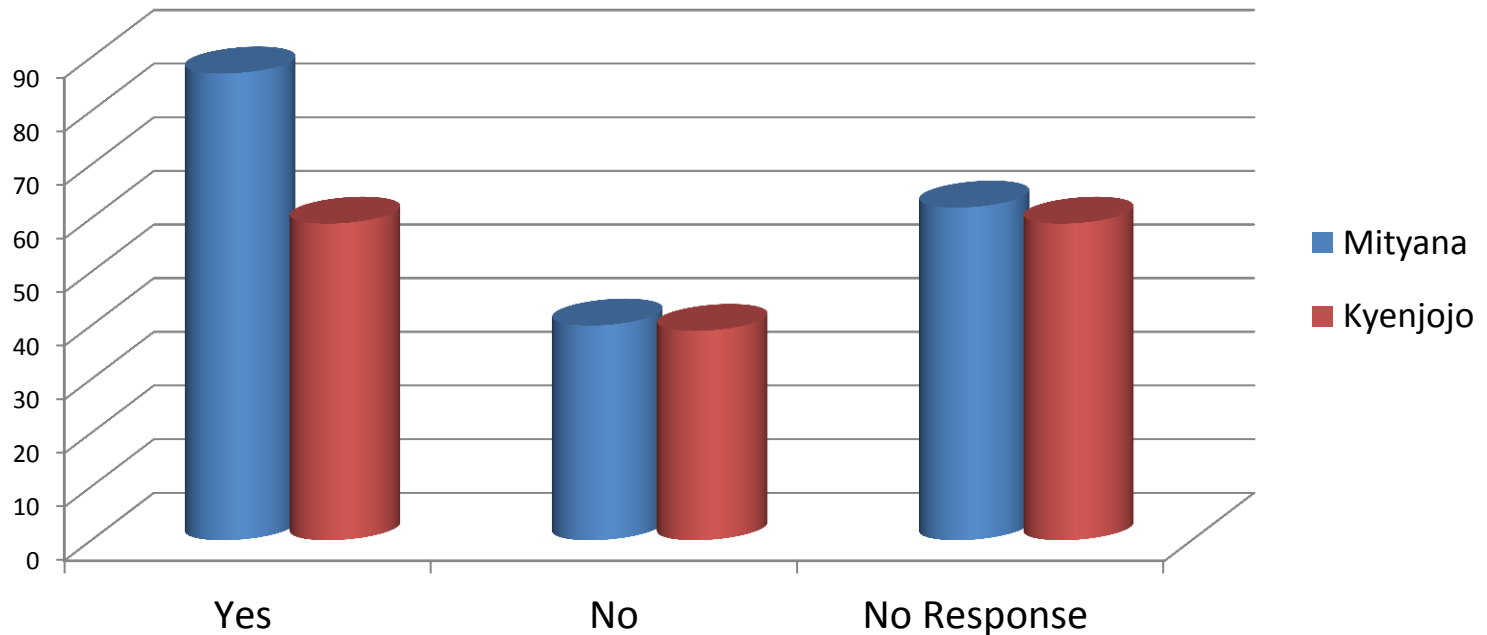


NATIONAL DRUG AUTHORITY



Example of Inspection Data Analyzed

Are you an Accredited Drug Shop?



NATIONAL DRUG AUTHORITY



What does SDSI leave behind?

- Detailed GPS training manual for drug inspectors and data collection summary sheets
- Trained all regional NDA inspectors to collect GIS data and generate maps of drug shops
- Interactive Excel database enabling sharing of datasets (imported & exported files) generated from GIS Mapping.
- All ADS and Class C in Mityana, Kyenjojo, and Kibaale mapped for ease of inspection, monitoring, and evaluation
- Transferring ownership of GPS instruments to NDA



NATIONAL DRUG AUTHORITY



Remaining Challenges

- GPS knowledge is hands on technology and a learn by doing instrument, hence learning varied depending on individual interest and level of proactiveness of the participants.
- The inspectors' electronic notebooks (laptops) cannot handle the 3D imagery.
- Inspection data is currently collected using paper forms; electronic data collection using GIS-enabled tablets would be more efficient and help ensure data accuracy.



Lessons learned from implementation

- Inspectors are capable of capturing GPS location of shops and create maps.
- Generated ADS maps should be viewed on desktops or laptops in the NDA offices rather than on notebooks because desktops/laptops are more compatible with Garmin Base Camp & Google Earth software, which is required for inspectors to fully view maps
- More similar trainings and field exercises required for sustainability



NATIONAL DRUG AUTHORITY



Take home messages

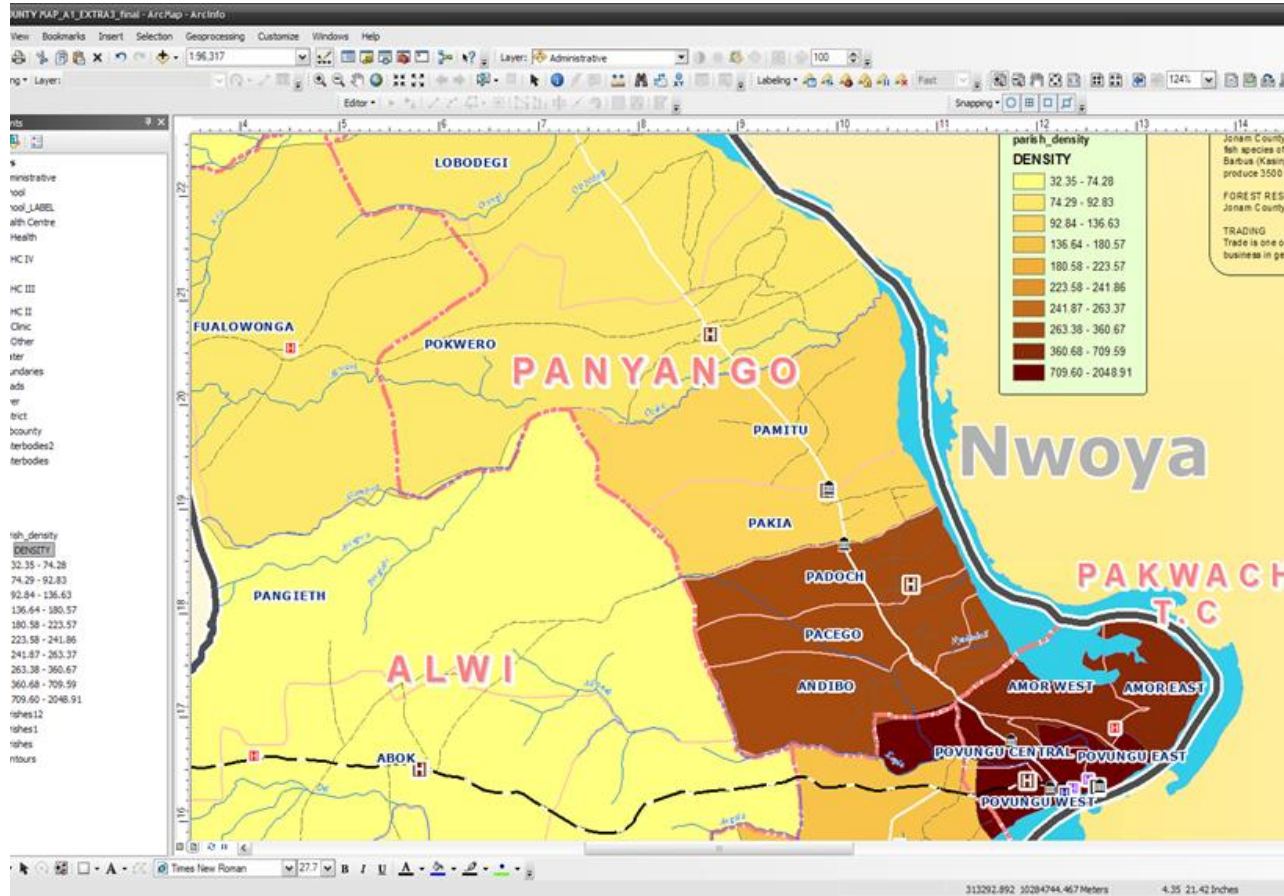
- The generated maps can improve the process of monitoring, supervision, and follow-ups by drug inspectors in ensuring comprehensive assessments.
- Such maps and electronic inspection data collection may help improve inspection efficiency and make the data more accessible for decision makers
- Developing maps in additional districts in Uganda and comparing with maps of population density will help reveal underserved areas that lack access to medicines
 - Can then target interventions in these areas



NATIONAL DRUG AUTHORITY

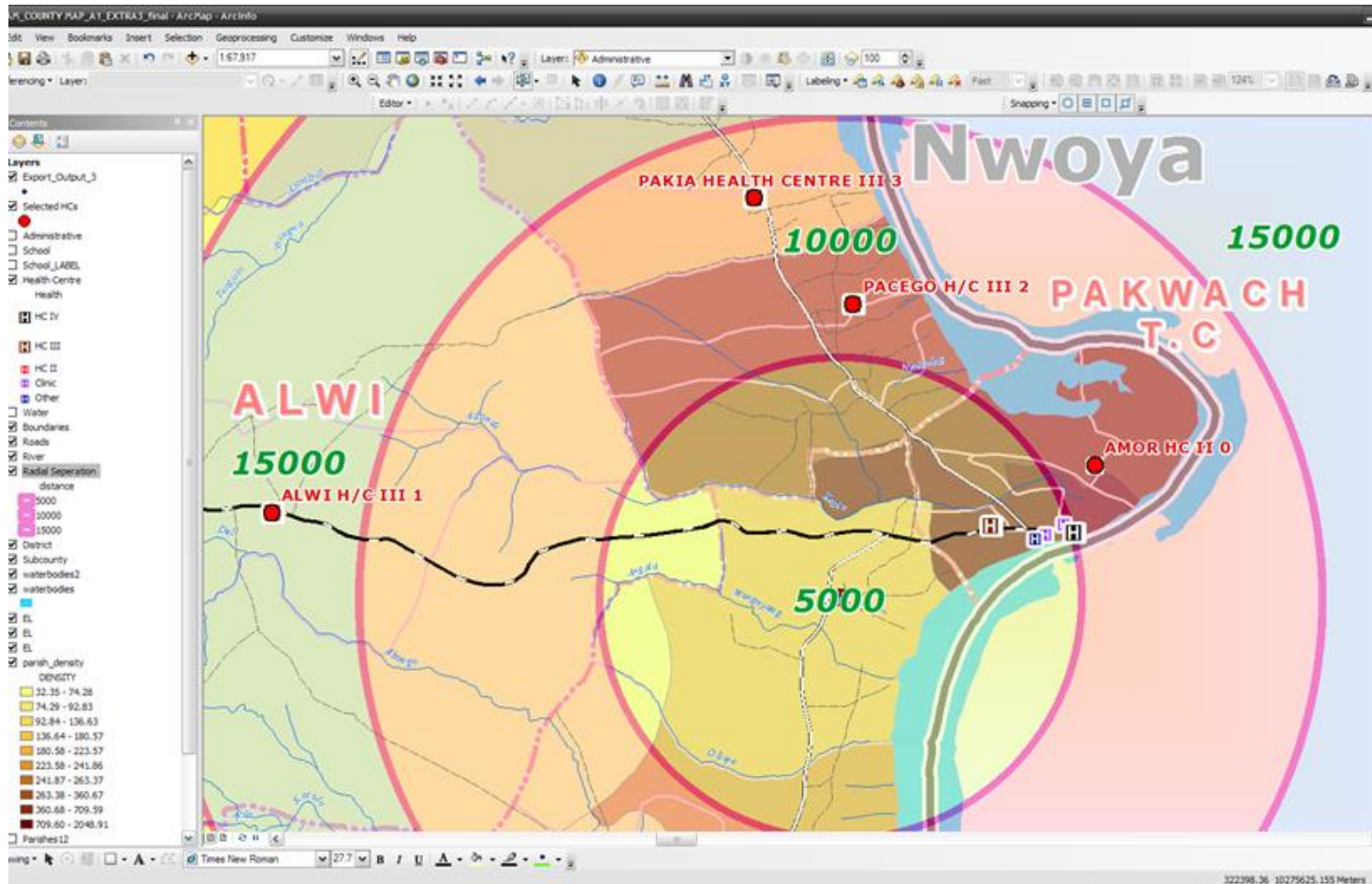


Population Density Map- Nebbi District



Population Density

Radial separation of 5, 10, and 15 km



NATIONAL DRUG AUTHORITY



Thank You.

